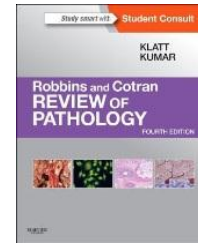
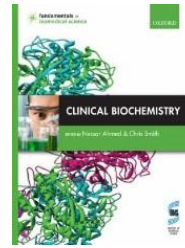
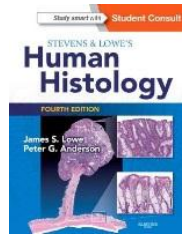
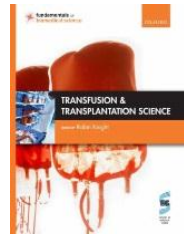


Sir Thomas Browne Library

A selection of popular books for Biomedical Scientists



Title

Shelfmark

Stevens and Lowe's human histology by James Lowe	QS 504
Wheater's functional histology by Barbara Young	QS 517
Clinical biochemistry by Nessar Ahmed	QU 4
Marks' essentials of medical biochemistry a clinical approach by Michael Lieberman	QU 34
Koneman's color atlas and textbook of diagnostic microbiology	QW 4
Medical microbiology by Michael J. Ford	QW 4
Human virology by John Oxford	QW 160
Biomedical science practice by Hedley Glencross	QY 25
Guide to laboratory investigations by M. McGhee	QY 25
Blood cells: a practical guide by Barbara Bain	QY 402
Transfusion and transplantation science by Robin Knight	WB 356
Atlas of tropical medicine and parasitology	WC 17
Oxford Handbook of clinical immunology and allergy by Gavin Spickett	WD 301
Essential haematology by A.V. Hoffbrand	WH 100
Haematology by Gary Moore	WK 100
Essential endocrinology and diabetes by Richard Holt	WK 100

To borrow a book from this collection visit The Sir Thomas Browne Library or for details of more books and resources in this collection or to search the library catalogue visit www.elms.nhs.uk

Email: library@nnuh.nhs.uk
Phone: 01603 286893 (internal ext. 2893)
Twitter: @NNUH_Library

Sir Thomas Browne Library

Location of books in the library	Shelfmark
Biomedical science	QY 25
Histology	QS 504
Chemistry	QU 34
Toxicology	QV 602
Microbiology	QW 4
Virology	QW 160
Andrology	QY 190
Blood cells	QY 402
Pathology	QZ 50
Transfusion	WB 356
Infectious diseases	WC 17
Immunology	WD 301
Haematology	WH 100
Endocrinology	WK 100

Some key e-journals available with your Athens password:

Annals of allergy, asthma and immunology
Annals of diagnostic pathology
Biology of blood and marrow transplantation
Blood
Blood reviews
British journal of haematology
Clinics in laboratory medicine
Journal of clinical investigation
Journal of hospital infection
Lancet haematology
Lancet infectious diseases

Useful websites:

www.eel.nhs.uk Discover more about the East of England Health Libraries and their resources, access your Athens account and search the healthcare databases for articles. Links to electronic journals and books (via Athens) and NHS evidence.

www.elms.nhs.uk The East of England Health Libraries Catalogue. Browse the catalogue or log in to renew or reserve items.

[http://www.nice.org.uk/](http://www.nice.org.uk) Evidenced-based information for health, public health and social care professionals, including access to BNF & BNFC.

www.clinicalkey.com E-journals, e-books, images and more.

www.dynamed.com Keep up to date in your specialty.
